

## Monthly Weather Summary in Thailand May 2012

In May 2012, hot weather still persisted in Thailand during early month with very hot weather in some areas of the northern, northeastern and central parts. After that, during May 5-7, the low pressure cell in the Gulf of Martaban moved to cover lower northern Thailand and the country has experienced the southwest monsoon season. These caused the areas of swelter weather were widely reduced while rainfall was relatively increased which regarded as the beginning of rainy season for this year on May 5. Moreover, the low pressure cell covered upper Thailand during mid-month in addition with the monsoon trough lay across upper Thailand during late month causing intermittent abundant rainfall in upper Thailand with thunderstorm and gusty wind occurred in several places. For southern part, under the influence of the southwest monsoon prevailing over the Andaman Sea, Thailand and the Gulf of Thailand resulted in abundant rainfall nearly the whole month especially along the west coast. Monthly rainfall was above normal in northern part 84.6 mm (49%), northeastern part 56.5 mm (31%), eastern part 49.2 mm (23%) and southern part (west coast) 68.2 mm (22%) while it was inversely below normal in central part and southern part (east coast) 17.6 mm (11%) and 23.3 mm (17%), respectively. Mean temperatures of May were slightly above normal in all parts of the country.

**1 – 10 May :** Due to the heat low pressure cell covering upper Thailand and the southerly wind prevailing over the mentioned areas, generally hot weather persisted in upper Thailand with very hot weather in several areas during early period, the highest maximum temperature of 41.5 °C was measured at Amphoe Muang, Uttaradit province on May 3. After that, during May 5-7, the low pressure cell in the Gulf of Martaban moved to cover lower northern Thailand in addition with the southwest monsoon prevailed over the Andaman Sea, Thailand and the Gulf of Thailand. These caused temperature relatively decreased whereas the amount and distribution of rainfall generally increased especially in the northern part, widespread rain with heavy to very heavy rainfall in several areas was found during May 5-7. The highest daily rainfall was 179.0 mm at Wang Chin, Phrae province on May 6. Besides, thunderstorm and gusty wind occurred at Khon Kaen province on May 1, and at Ratchaburi, Phra Nakhon Sri Ayutthaya and Nakhon Ratchasima provinces on May 2, Udon Thani province on May 3 and Chai Nat province on May 4. Thunderstorm and hail also occurred at Nonthaburi province on May 3 as well as Chiang Mai and Lampang provinces were affected by flash floods on May 6. Southern Thailand experienced plentiful of rainfall particularly along the west coast, widespread rain with isolated heavy rainfall was found almost the whole period. The maximum daily rainfall of 68.7 mm was reported at Amphoe Muang, Ranong on May 7. Flash floods occurred at Nakhon Si Thammarat province on May 6.

**11 – 20 May :** The southwest monsoon prevailing over the Andaman Sea, Thailand and the Gulf of Thailand was strengthened during the middle and the end of the period. In addition, the low pressure cell covering the central and eastern parts moved into the Gulf of Martaban during the second half of the period and downgraded on the last day of the period. These conditions caused scanty rainfall in upper Thailand during early period after that rainfall relatively increased, scattered to fairly widespread rain with isolated heavy to very heavy rainfall was found in the northern and northeastern parts while much rain of central and eastern parts mainly observed during the second half of the period. The highest daily rainfall was 131.6 mm at Sattahip, Chon Buri province on May 17. Thunderstorm and gusty wind occurred at Bangkok Metropolis on May 14 and at Chiang Mai, Phrae, Uttaradit, Sukhothai, Nakhon Sawan and Chon Buri provinces on May 15 and at Ang Thong province on May 20 with the occurrence of hail at Chiang Rai province on May 17. In southern part, rainfall was mainly observed along the west coast, the highest rainfall amount was 49.0 mm at Kong Ra in

Phatthalung province on May 16. Thunderstorm and gusty wind occurred at Prachuap Khiri Khan province on May 17.

**21 – 31 May :** Due to the influence of the rather active southwest monsoon prevailing over the Andaman sea, Thailand and the Gulf of Thailand was active during mid-period accompanied by the monsoon trough lying across the northern and upper northeastern parts resulted in abundant rainfall in upper Thailand particularly in northern and northeastern parts where fairly widespread rain with isolated heavy to very heavy rainfall was found nearly the whole period. The maximum daily rainfall was 182.3 mm at Kosum Phisai, Mahasarakham province on May 26. Thunderstorm and gusty wind occurred at Kalasin on May 23 and flash floods at Uttaradit province on May 26 and at Loei province on May 29. For southern Thailand, rainfall relatively increased especially along the west coast that experienced widespread rain nearly the whole period, isolated heavy to very heavy rainfall was found mainly during mid-period. The highest daily rainfall of 108.1 mm was measured at Amphoe Muang in Ranong province on May 26. Thunderstorm and gusty wind occurred at Krabi on May 23 and at Songkhla, Surat Thani, Nakhon Si Thammatat, Phuket, Phangnga, Trang and Satun provinces on May 27 and also at Krabi province on May 28.

---

**Note :** Rainfall, temperatures and natural disasters available in this report are preliminary data.

Climatological Center  
Meteorological Development Bureau  
Meteorological Department

Monthly Current Report  
Rainfall and Accumulative Rainfall  
May 2012

Northern Thailand

Station	Temperature ( °c)		Rainfall (mm)		Accumulative rainfall (mm) Since 1 January	
	Mean	Above or below normal	Actual	Above or below normal	Actual	Above or below normal
Chiang Rai	27.3	0.3	509.8	315.1	706.1	372.5
Mae Hong Son	28.4	-0.3	301.8	133.5	451.4	194.9
Phayao	27.5	-0.6	229.0	60.3	362.8	61.3
Chiang Mai	28.6	0.5	216.4	61.0	311.6	67.5
Tha Wang Pha	28.3	0.1	197.1	6.6	408.7	57.4
Nan	28.6	0.2	289.0	121.2	653.7	337.8
Lamphun	28.6	-0.3	246.9	100.5	263.6	53.0
Lampang	28.3	-0.4	327.3	178.8	459.4	212.1
Mae Sariang	28.5	-0.1	231.5	68.7	266.2	31.4
Phrae	28.3	-0.6	389.5	215.5	516.5	224.6
Uttaradit	29.4	-0.4	507.8	274.6	554.2	194.6
Bhumibol Dam	29.4	-0.2	233.1	50.2	317.7	45.4
Tak	29.8	0.2	267.2	106.0	315.9	86.7
Mae Sot	28.1	0.3	211.8	43.0	243.9	17.2
Umphang	25.7	0.1	256.0	69.7	439.0	108.2
Phitsanulok	29.7	-0.1	176.9	-1.5	271.8	-9.6
Lom Sak	28.9	0.3	134.1	-25.2	238.8	-54.7
Phetchabun	29.0	0.2	166.7	10.9	290.5	3.8
Wichian Buri	29.6	0.1	108.1	-59.6	330.6	14.0
Kamphaeng Phet	29.6	0.1	159.9	-38.3	268.2	-21.8
Over the area	28.6	0.0	258.0	84.6 49%	383.5	99.9 35%

Northeastern Thailand

Station	Temperature ( °c)		Rainfall (mm)		Accumulative rainfall (mm) Since 1 January	
	Mean	Above or below normal	Actual	Above or below normal	Actual	Above or below normal
Nong Khai	28.6	0.3	314.2	87.6	588.2	228.2
Loei	27.9	0.2	264.1	61.4	398.7	37.9
Udon Thani	28.8	0.1	207.8	13.3	255.4	-95.8
Nakhon Phanom	28.4	0.2	266.3	29.1	530.3	109.3
Sakon Nakhon	28.6	0.3	221.2	-2.8	718.2	320.9
Mukdahan	29.3	0.5	215.0	38.5	322.5	-3.5
Khon Kaen	28.5	-0.5	224.3	52.5	422.4	122.7
Kosum Phisai	29.1	-0.2	414.9	257.0	663.2	354.0
Roi Et	29.0	0.1	256.0	71.3	452.2	132.2
Chaiyaphum	28.9	0.0	225.3	78.0	315.6	15.1
Ubon Ratchathani	28.8	-0.1	227.4	17.3	347.9	9.4
Tha Tum	29.5	0.0	287.5	119.3	478.9	167.1
Surin	29.0	0.1	138.8	-26.8	253.9	-49.3
Nakhon Ratchasima	29.1	0.2	124.6	-12.6	387.1	123.5
Chok Chai	28.9	0.2	205.5	50.0	421.4	135.8
Nang Rong	28.5	-0.4	228.1	70.5	316.7	18.9
Over the area	28.8	0.1	238.8	56.5 31%	429.5	101.6 31%

- NOTES :
- 1) Mean temperature is the average of daily dry-bulb temperature
  - 2) "T" is trace, rainfall amount less than 0.1 mm.
  - 3) "blank" is incomplete data.
  - 4) Temperature and rainfall are preliminary data.

Monthly Current Report  
Rainfall and Accumulative Rainfall  
May 2012

Central Thailand

Station	Temperature ( °c)		Rainfall (mm)		Accumulative rainfall (mm) Since 1 January	
	Mean	Above or below normal	Actual	Above or below normal	Actual	Above or below normal
Nakhon Sawan	30.0	-0.2	163.8	10.7	256.1	-6.6
Bua Chum	29.4	0.1	216.3	83.9	361.7	85.7
Lop Buri	30.1	0.5	134.1	-13.1	247.5	-15.8
Suphan Buri	30.0	0.2	162.1	41.5	212.4	0.6
Thong Pha Phum	28.2	-0.2	125.7	-78.9	344.5	-23.2
Kanchanaburi	30.3	0.4	102.9	-32.4	201.1	-53.3
Bangkok Airport	30.7	1.2	111.5	-54.8	163.3	-117.2
Bangkok Metropolis	30.5	0.8	121.9	-97.7	311.2	-42.3
Over the area	29.9	0.3	142.3	-17.6 -11%	262.2	-21.5 -8%

Eastern Thailand

Station	Temperature ( °c)		Rainfall (mm)		Accumulative rainfall (mm) Since 1 January	
	Mean	Above or below normal	Actual	Above or below normal	Actual	Above or below normal
Prachin Buri	29.8	0.5	213.6	-0.1	294.8	-122.0
Kabin Buri	28.9	0.0	164.2	-35.7	259.4	-106.0
Aranyaprathet	29.5	0.6	163.7	-6.4	282.4	-53.3
Chon Buri	30.5	0.9	116.8	-48.5	309.1	3.2
Ko Sichang	29.9	0.3	236.8	102.4	328.7	54.3
Pattaya	29.3	0.1	141.5	-14.6	200.0	-91.0
Sattahip	29.7	0.1	215.6	40.2	346.2	-6.2
Rayong	29.5	-0.3	184.8	-7.0	417.0	16.8
Chanthaburi	28.2	0.1	545.9	209.4	861.2	306.0
Khlong Yai	27.7	-0.7	622.9	251.9	1181.7	419.1
Over the area	29.3	0.2	260.6	49.2 23%	448.1	42.1 10%

- NOTES :
- 1) Mean temperature is the average of daily dry-bulb temperature
  - 2) "T" is trace, rainfall amount less than 0.1 mm.
  - 3) "blank" is incomplete data.
  - 4) Temperature and rainfall are preliminary data.

Monthly Current Report  
Rainfall and Accumulative Rainfall  
May 2012

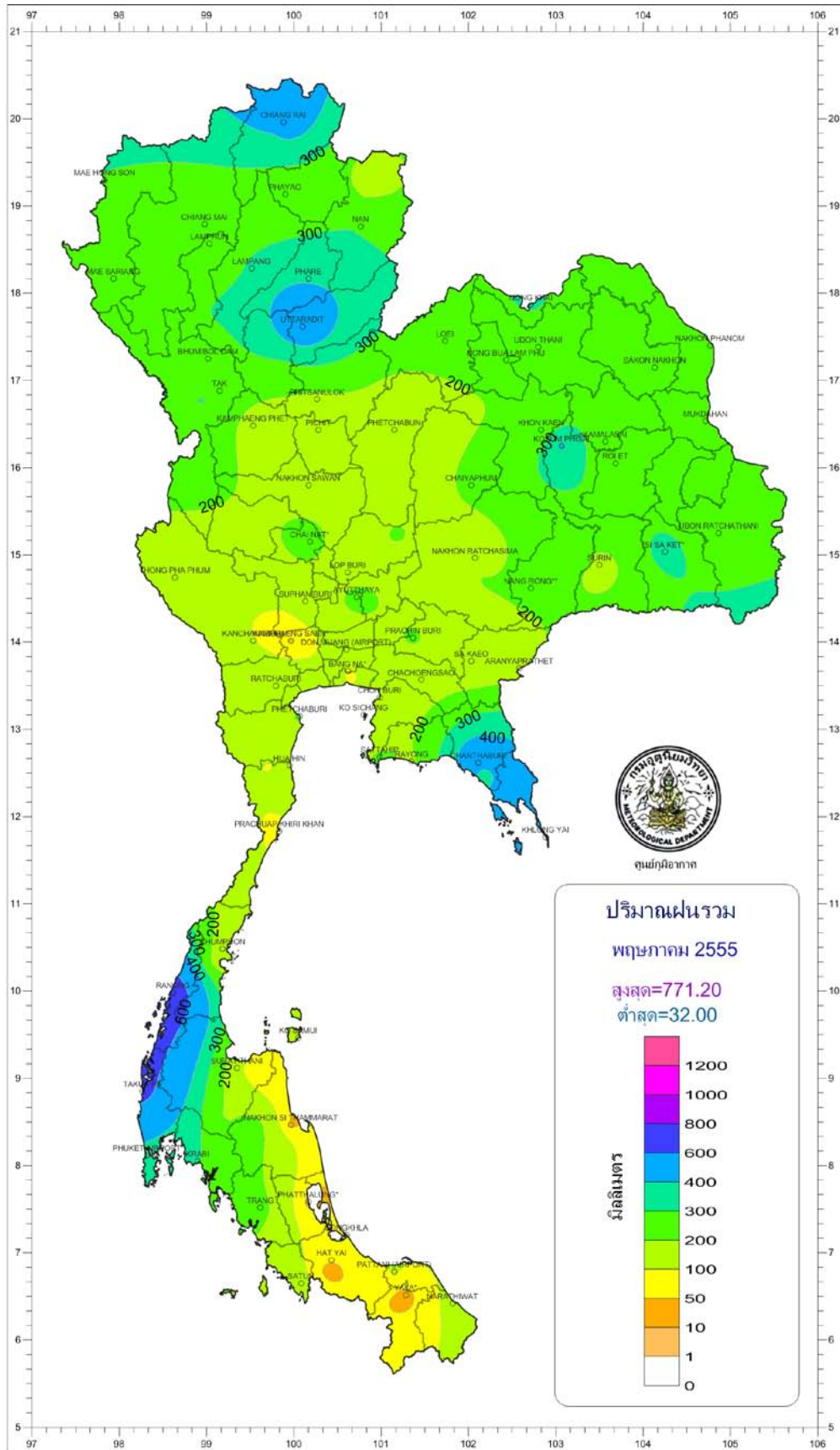
Southern Thailand, east coast

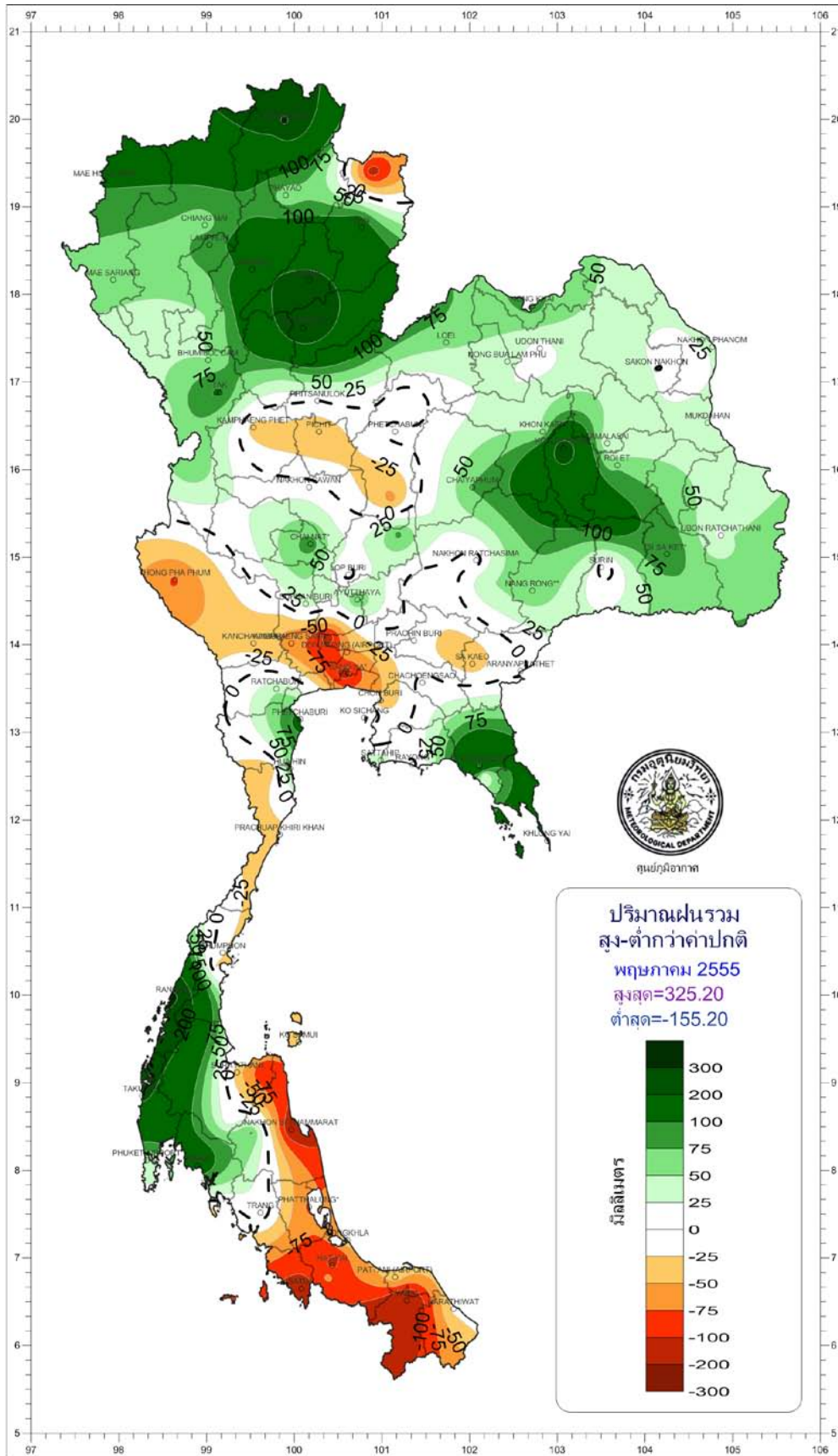
Station	Temperature ( °c)		Rainfall (mm)		Accumulative rainfall (mm) Since 1 January	
	Mean	Above or below normal	Actual	Above or below normal	Actual	Above or below normal
Phetchaburi	29.4	0.0	203.9	116.8	315.2	161.9
Hua Hin	29.4	0.2	176.5	77.3	245.2	51.8
Prachuap Khiri Khan	29.1	0.4	85.3	-36.1	310.8	38.2
Chumphon	28.1	0.1	152.2	-21.8	584.8	128.5
Surat Thani	27.8	0.0	116.6	-39.0	741.9	412.3
Ko Samui	29.1	0.1	108.3	-35.3	576.1	105.1
Nakhon Si Thammarat	28.8	0.7	39.9	-132.3	1311.6	766.4
Songkhla	29.1	0.0	87.8	-31.7	846.2	513.6
Hat Yai Airport	28.0	0.3	55.0	-106.7	589.7	191.7
Pattani Airport	28.5	0.5	106.6	-30.6	788.2	460.2
Narathiwat	28.6	0.3	123.9	-17.6	867.2	421.5
Over the area	28.7	0.2	114.2	-23.3 -17%	652.4	295.5 83%

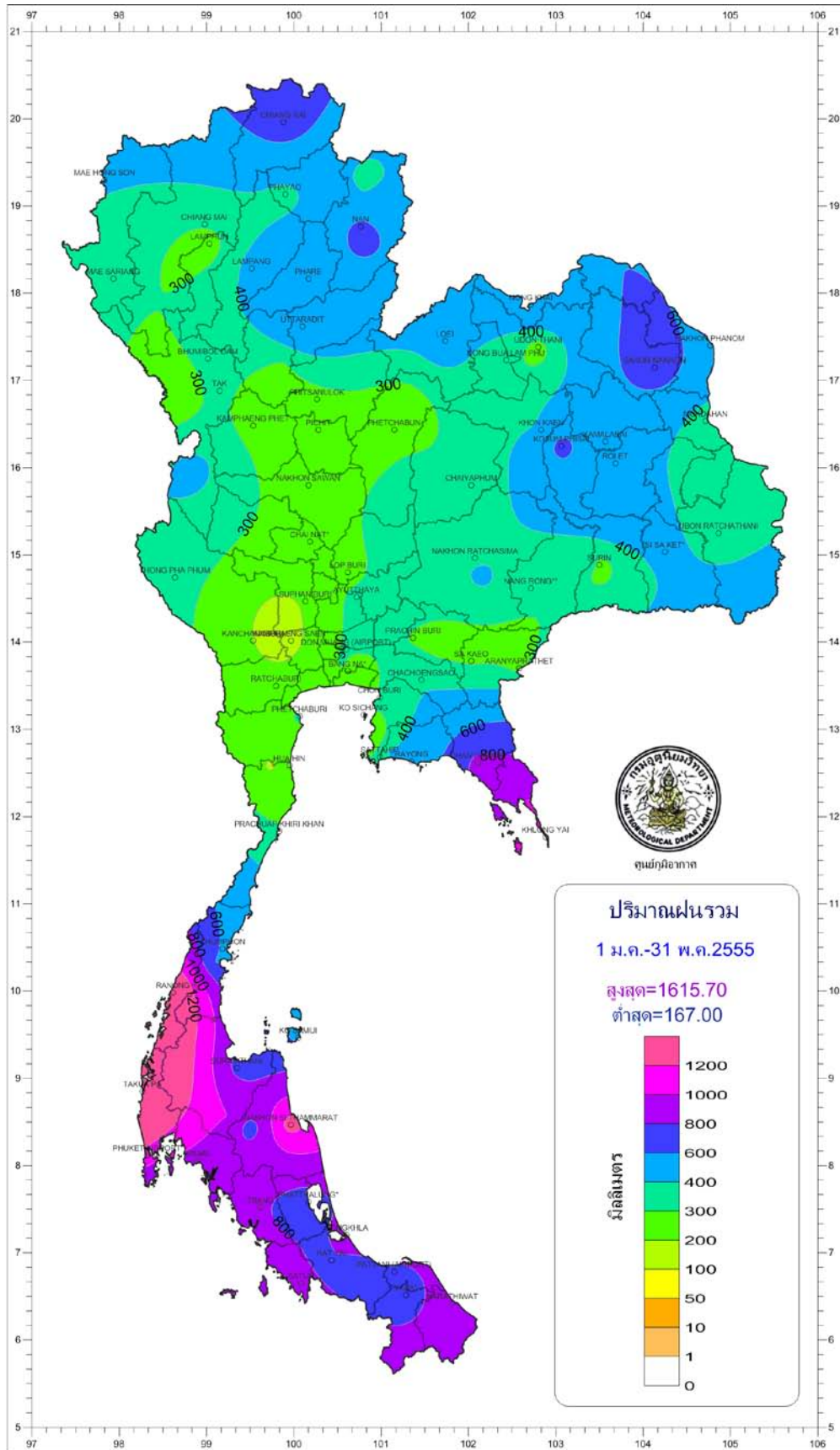
Southern Thailand, west coast

Station	Temperature ( °c)		Rainfall (mm)		Accumulative rainfall (mm) Since 1 January	
	Mean	Above or below normal	Actual	Above or below normal	Actual	Above or below normal
Ranong	27.3	-0.2	771.2	325.2	1570.0	890.8
Takua Pa	27.3	-0.5	661.1	215.8	1615.7	800.6
Phuket	29.0	0.5	310.1	27.5	829.1	299.9
Phuket Airport	28.7	0.6	340.6	49.2	1143.3	544.4
Ko Lanta	28.9	0.2	228.1	-40.0	836.1	367.7
Trang Airport	27.8	0.2	237.9	17.8	814.1	336.4
Satun	28.3	0.2	133.5	-118.0	996.4	377.7
Over the area	28.2	0.2	383.2	68.2 22%	1115.0	516.9 86%

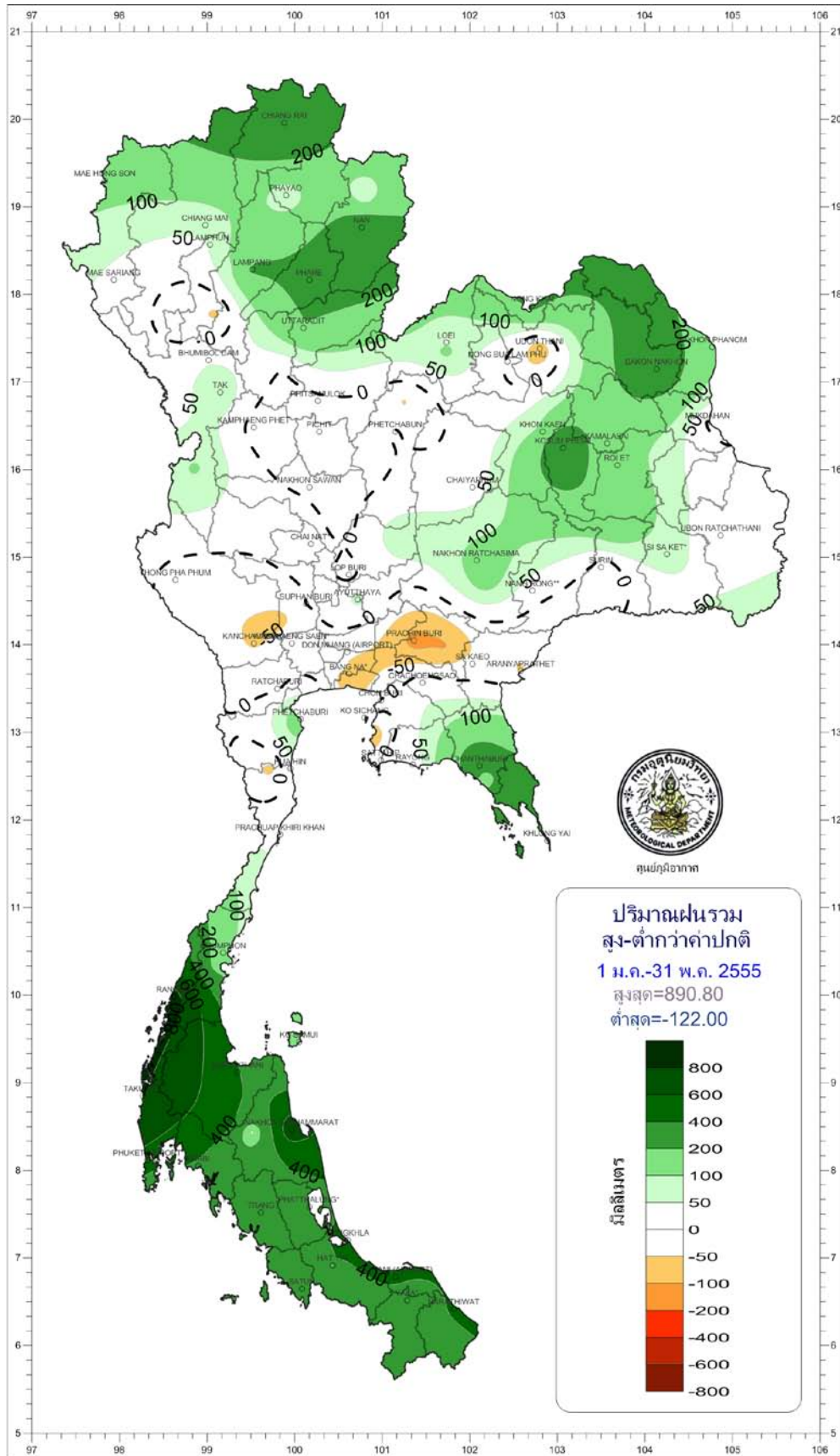
- NOTES :
- 1) Mean temperature is the average of daily dry-bulb temperature
  - 2) "T" is trace, rainfall amount less than 0.1 mm.
  - 3) "blank" is incomplete data.
  - 4) Temperature and rainfall are preliminary data.

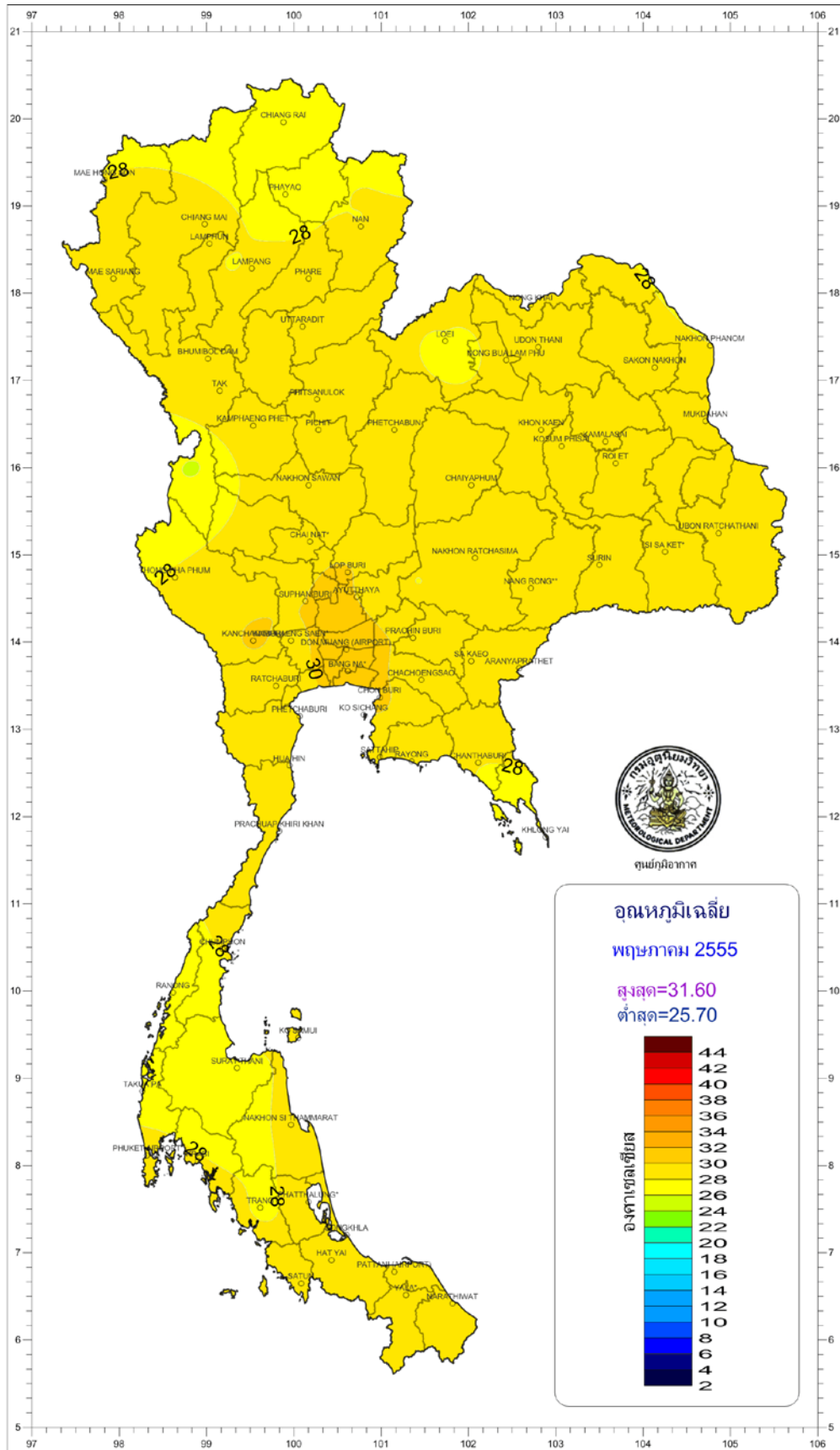


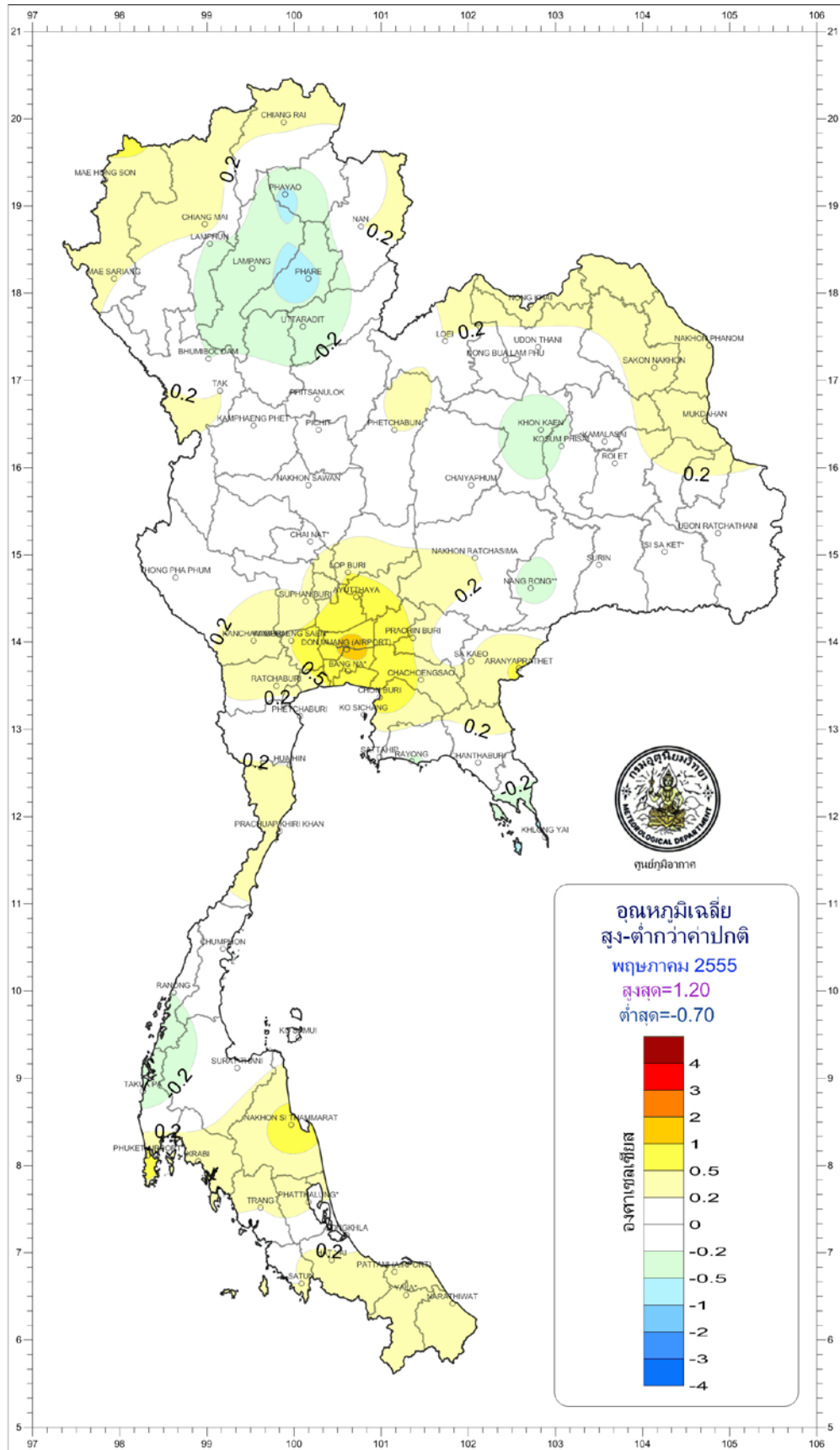












อุตุนิยมวิทยา

